



BeBright **COMPANY INTERFACE**

BeBright, a proud member of the **Bronet Group**, is a leader in **Experiential Technologies**, creating immersive, technology-driven environments that redefine how people engage with brands and spaces. We specialize in the design, integration, and delivery of **advanced LED display systems and comprehensive Audio Visual solutions** as part of holistic experience strategies.

From concept to execution, our multidisciplinary team focuses on experience-led design, energy efficiency, and global-quality standards. Supported by a strong in-house R&D capability, *BeBright* delivers reliable, scalable, and customized solutions, empowering clients to build future-ready experience centres and impactful brand destinations that inform, inspire, and endure.

- WHY CHOOSE US -

2500+

PROJECTS COMPLETED

12+

COUNTRIES

400+

TECHNICIANS

BeBright **GLOBAL OPERATIONS**

BeBright is renowned for delivering **End-to-End Experiential Technology Solutions**, encompassing consultation, supply, integration, and execution across a wide range of immersive display and Audio Visual systems. With thousands of satisfied clients worldwide, we are committed to providing robust after-sales support and lifecycle services, ensuring long-term performance, reliability, and consistent experience quality across all deployed experience environments.

GLOBAL FACILITIES

- Regional Service Centres

To cater to our global clientele, we have established **50 direct & partner service team centers** in strategic locations **worldwide**.

- Asia
- Middle East
- Africa
- North America & EU

BeBright *GLOBAL TEAM SUPPORT*

Experiential Technology Consultation

Strategic guidance and expert planning to design, integrate, and deliver immersive experiential technologies that elevate engagement and create meaningful connections.

Global Service Managers

Each region is overseen by a Service Manager, ensuring consistent, high-quality service throughout.

Customer Support Representatives

Our customer support team ensures smooth communication and quick resolution, while our global after-sales service maximizes the performance and lifespan of our display solutions.

Content Creation & User Experience Consultation

Strategic content development and user experience consulting to craft intuitive, engaging, and emotionally resonant journeys across immersive digital environments..

400+ Experienced Technicians

Our certified technicians, trained in the latest tech, expertly maintain and repair all type of display solutions including LCD & LED.

Inhouse LED Repair Facility

We are equipped with the tools and technicians to do all type of repairing of LED screen in-house..

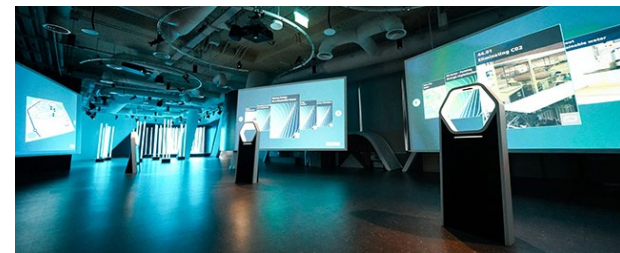
MISSION

Together, we elevate the quality of **Experiential Technologies** by designing and delivering immersive, human-centric solutions that are accessible, adaptive, and aligned with the evolving needs of global markets.

VISION

To become one of the world's leading facilitators of **Experiential Technology**, harnessing innovation to create meaningful, memorable experiences that inspire connection, confidence, and delight.

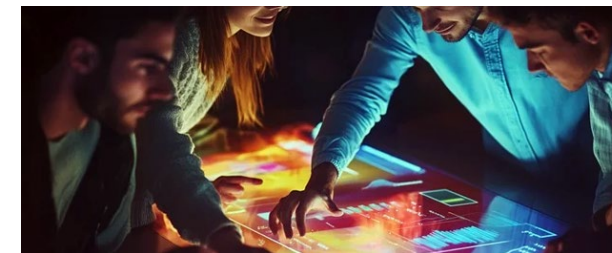
BeBright
GLOBAL SERVICES



Experience Centre Strategy,
Consultation & Execution



Events, Exhibitions & Brand
Activation Technologies



Interactive & Immersive
Technology Solutions



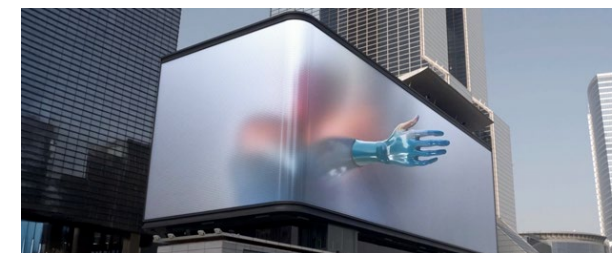
Projection Mapping & Spatial
Storytelling



Indoor & Outdoor LED Display
Solutions



Hologram, HoloBox & Volumetric
Display Solutions



Anamorphic 3D LED
Display Solutions



AR .VR .XR
Immersive Technologies



Interactive Wall Technology
Solutions



Smart Classroom, Boardroom &
Presentation Systems



Professional PA, BGM & Acoustic
Solutions



Landmark Pylon, Unipole & Digital
Signage Solutions

Experience Centre Strategy, Consultation & Execution

BeBright delivers end-to-end Experience Centre Strategy, Consultation, and Execution, uniting brand vision, storytelling, and technology into cohesive, immersive environments. From experience strategy and narrative development to content direction, interactive design, and on-site implementation, we create experience centres that engage audiences, clarify complex messages, and deliver memorable, technology-driven brand journeys.



Brand & Corporate Experience Centres

Purpose: Brand storytelling, vision, and identity

Includes: Brand Experience Centres, Corporate & Leadership Centres

Focus: Values, culture, aspiration, brand perception



Customer & Sales Experience Centres

Purpose: Engagement, education, and conversion

Includes: Customer Experience Centres, Sales & Investment Centres

Focus: Product understanding, personalization, confidence building



Innovation & Technology Experience Centres

Purpose: Showcase innovation and future vision

Includes: Innovation, Technology & Future Labs

Focus: R&D, smart technologies, data visualization, foresight



Learning & Knowledge Experience Centres

Purpose: Education through engagement

Includes: Learning, Training & Education Centres

Focus: Interactive learning, exploration, skill development



Heritage & Cultural Experience Centres

Purpose: Storytelling of history and identity

Includes: Heritage, Cultural & National Pavilions

Focus: Narrative, authenticity, emotion, preservation



Public, Exhibition & Event Experience Centres

Purpose: Large-scale engagement and visibility

Includes: Exhibitions, World Expos, Event & Temporary Centres

Focus: Impact, scalability, audience flow, adaptability

BeBright
GLOBAL SERVICES

www.bebright.global

BeBright
Brighten the experience

LED Display Solutions

BeBright's LED Display Solutions deliver high-impact visual experiences for indoor and outdoor environments, ranging from fine-pitch video walls and curved feature displays to transparent façades, rental screens, and large-format digital signage. Designed for clarity, brightness, and reliability, our systems integrate seamlessly with AV and control platforms, enabling immersive storytelling, real-time content, and long-term performance with professional installation and global support.



Experience Centres & Showrooms

Best-fit: Fine-pitch indoor LED walls, curved LED, interactive LED
Why: Close viewing distance, premium visuals, brand storytelling
Key needs: High resolution, color accuracy, low glare, seamless integration



Corporate Lobbies & Brand Entrances

Best-fit: Large-format indoor LED feature walls, sculptural/curved LED
Why: First-impression impact and architectural integration
Key needs: High brightness, elegant design, long daily operating hours



Control Rooms & Command Centres

Best-fit: Ultra fine-pitch LED, redundancy-ready systems
Why: 24/7 mission-critical monitoring and clarity
Key needs: Uniformity, stability, low eye strain, redundancy, serviceability



Retail Stores & Luxury Flagships

Best-fit: Window LED, transparent LED, shelf-edge LED, anamorphic LED
Why: Attract attention and elevate product storytelling
Key needs: High brightness, strong contrast, creative formats, durability



Outdoor Advertising & DOOH Billboards

Best-fit: High-brightness outdoor fixed LED billboards
Why: Sunlight visibility and long-distance viewing
Key needs: Weatherproofing, thermal management, high brightness, remote monitoring



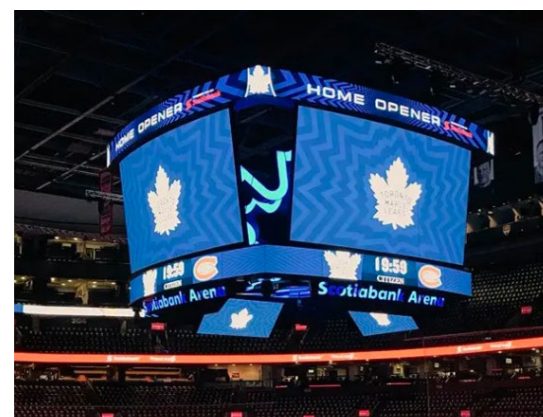
Building Facades & Media Architecture

Best-fit: Media mesh / LED façade / strip LED systems
Why: Covers large surfaces while keeping airflow and architectural aesthetics
Key needs: Lightweight structure, transparency, scalability, long-distance viewing



Events, Concerts & Exhibitions

Best-fit: Rental / touring LED systems (indoor + outdoor variants)
Why: Fast setup, modular flexibility, repeated assembly
Key needs: Quick-lock frames, lightweight panels, high refresh rate, ruggedness



Stadiums & Arenas

Best-fit: Perimeter LED boards, scoreboard LED, ribbon LED
Why: High-motion content, broadcast visibility, durability
Key needs: High refresh, impact protection, wide viewing angles, weather resistance



Roadsides: Pylon & Unipole Signage

Best-fit: Outdoor LED signage with long-range visibility
Why: Directional communication and landmark presence
Key needs: High brightness, readable content design, structural safety, remote control



Transportation & Public Infrastructure

Best-fit: Outdoor rugged LED, platform displays, information boards
Why: Reliability in heavy-use public environments
Key needs: Durability, readability, redundancy, maintenance access

BeBright
GLOBAL SERVICES

www.bebright.global

BeBright
Brighten the experience

Projection Mapping & Spatial Storytelling

Our Projection Mapping & Spatial Storytelling solutions transform physical architecture into dynamic, narrative-driven environments. By seamlessly integrating light, motion, sound, and spatial design, we create immersive visual stories that captivate audiences and enhance emotional connection. Ideal for experience centres, brand activations, museums, and large-scale events, these solutions turn spaces into unforgettable, multi-sensory experiences.



Experiential Projection Mapping

Application: Experience centres, museums, exhibitions, learning environments

Purpose: Support storytelling and immersive journeys

Key Focus: Narrative flow, emotion, audience engagement

Typical Use: Brand stories, heritage museums, innovation centres



Interactive Projection Mapping

Application: Floors, walls, objects, installations

Purpose: Enable real-time audience participation

Key Focus: Motion tracking, gesture response, playfulness

Typical Use: Exhibitions, education spaces, brand activations



Object & Product Projection Mapping

Application: Physical products, scale models, sculptures

Purpose: Explain features and functionality

Key Focus: Detail accuracy, synchronized visuals

Typical Use: Product launches, showrooms, technical demos



Stage & Event Projection Mapping

Application: Stages, set pieces, performance spaces

Purpose: Enhance live performances and presentations

Key Focus: Timing, synchronization, spectacle

Typical Use: Concerts, conferences, award shows



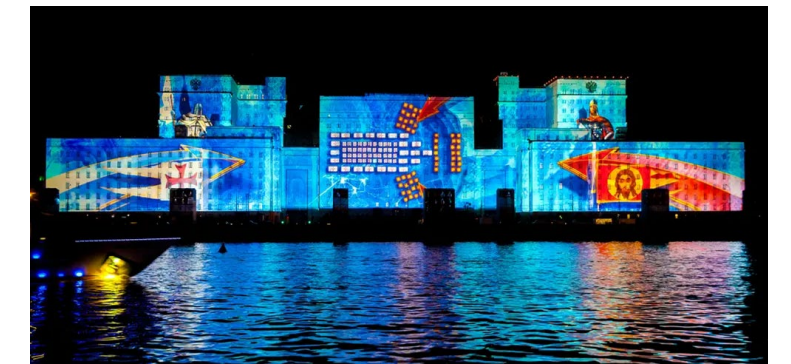
Retail & Commercial Projection Mapping

Application: Store interiors, window displays

Purpose: Attract attention and enhance retail storytelling

Key Focus: Visual impact, brand recall

Typical Use: Luxury retail, pop-ups, flagship stores



Outdoor Projection Mapping

Application: Building façades, landmarks, outdoor structures

Purpose: Mass reach, iconic visuals, strong brand recall

Key Focus: Scale, visibility, spectacle, public impact

Typical Use: City landmarks, brand launches, public events, cultural festivals

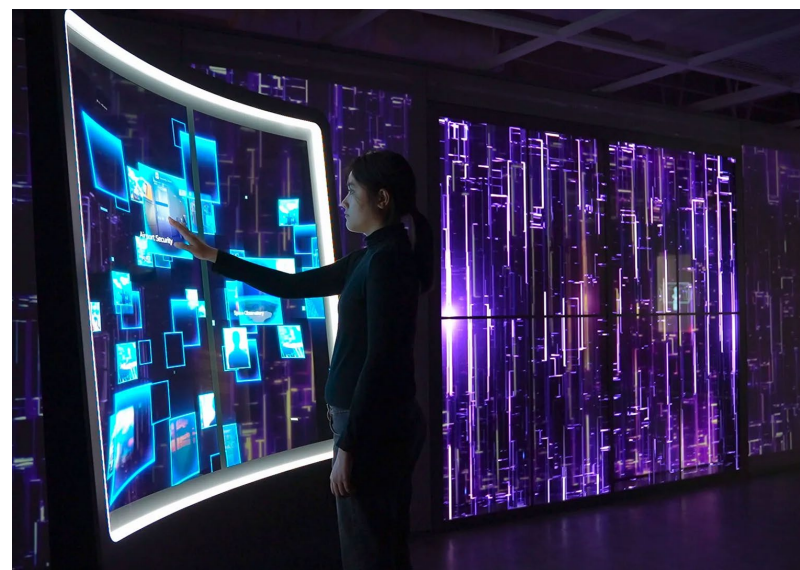
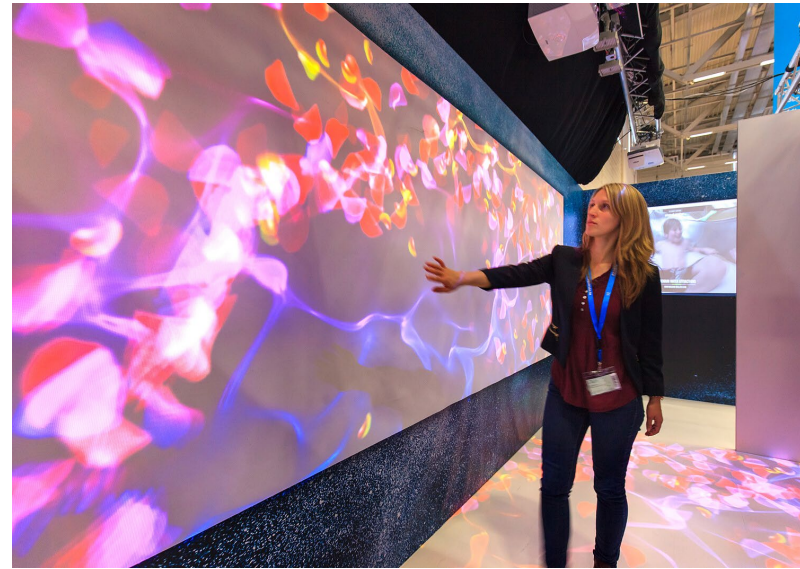
BeBright
GLOBAL SERVICES

www.bebright.global

BeBright
Brighten the experience

Interactive Wall Technology Solutions

Our Interactive Wall Technology Solutions transform static surfaces into dynamic, responsive engagement platforms. By integrating touch, motion sensing, and real-time content systems, these walls respond intuitively to user gestures and interactions, enabling immersive storytelling and exploration. Ideal for experience centres, exhibitions, showrooms, educational environments, and brand activations, interactive walls captivate audiences and elevate engagement through seamless, technology-driven interaction.



LED Interactive Walls

LED Interactive Walls combine high-resolution LED panels with touch, gesture, or motion-sensing technologies to create seamless, large-scale interactive environments. These walls offer exceptional brightness, color accuracy, and scalability, making them ideal for experience centres, showrooms, control rooms, and public spaces. Supporting multi-user interaction and real-time content, LED interactive walls enable immersive storytelling, data visualization, and brand engagement with reliable performance and long-term durability.

Projection-Based Interactive Walls

Projection-Based Interactive Walls use high-lumen laser projectors integrated with motion tracking, depth sensors, and computer vision to transform walls, floors, or architectural surfaces into dynamic interactive canvases. Content responds to user movement, gestures, or presence, creating immersive, touchless experiences. This technology is ideal for museums, exhibitions, educational spaces, and immersive installations, offering flexibility on irregular surfaces and enabling rich spatial storytelling with minimal physical hardware.

Transparent Display Based Interactive Walls

Transparent Display-Based Interactive Walls utilize transparent LED or OLED screens combined with interactive overlays to deliver futuristic, layered visual experiences. These solutions allow digital content to float over physical objects or architectural elements while maintaining visibility through the display. Ideal for luxury retail, museums, innovation hubs, and experience centres, transparent interactive walls merge physical exhibits with digital storytelling, enhancing engagement without obstructing the surrounding environment.

Anamorphic 3D LED Display Solutions

Our Anamorphic 3D LED Display Solutions transform flat LED surfaces into bold, illusion-driven visual experiences that create striking depth and realism. Through precise content design and optional interactive integration, these displays deliver dynamic, attention-grabbing experiences that respond to viewer perspective and context. Ideal for landmark façades, retail environments, and large-scale digital installations, anamorphic 3D solutions redefine visual storytelling and elevate audience engagement.



L-shaped anamorphic 3D display

An L-shaped anamorphic 3D display uses two seamlessly joined LED screens positioned at a right angle to create a powerful illusion of depth and dimensionality. By designing perspective-correct anamorphic content, visuals appear to extend beyond the physical screen boundaries, producing striking, hyper-realistic 3D effects without the need for glasses. This format maximizes visibility from key viewing angles, making it ideal for retail façades, experience centres, brand activations, and landmark digital installations. When paired with high-resolution LED panels and precise content calibration, L-shaped anamorphic displays deliver high-impact storytelling that captures attention, enhances spatial presence, and elevates audience engagement.



Flat Screen 3D Anamorphic Illusion

A flat screen 3D anamorphic display uses precisely crafted perspective-based content to create the appearance of depth and dimensionality on a single flat display. By aligning visuals to a specific viewing angle, objects appear to extend beyond the screen surface, producing a striking glasses-free 3D effect. This solution is ideal for retail displays, experience centres, exhibitions, and digital signage, delivering high-impact visual storytelling that captures attention and enhances audience engagement without additional hardware.



Curved Screen Anamorphic Display

A curved screen anamorphic display leverages the natural geometry of a curved LED surface to enhance depth, realism, and visual immersion. By applying perspective-optimized anamorphic content, visuals appear to wrap around the viewer, creating a powerful glasses-free 3D illusion. This format offers a wider viewing angle and smoother transitions compared to flat displays, making it ideal for experience centres, retail environments, exhibitions, and architectural installations where impactful, continuous storytelling and elevated audience engagement are essential.

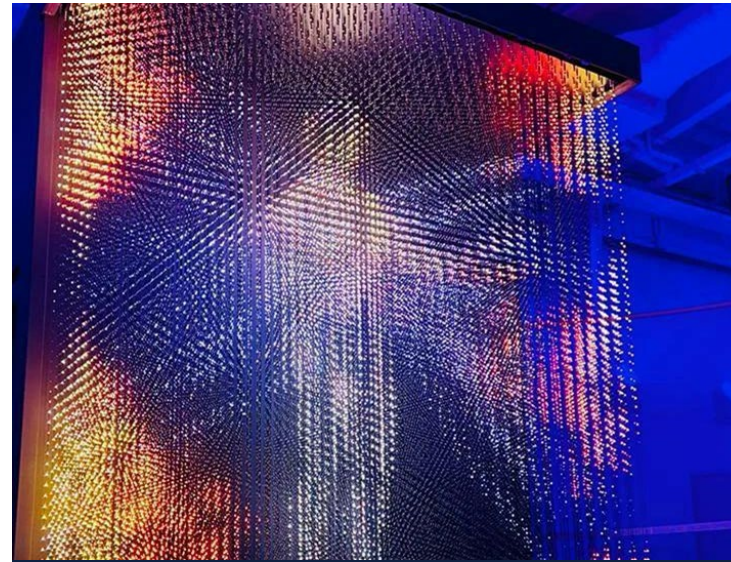
BeBright
GLOBAL SERVICES

www.bebright.global

BeBright
Brighten the experience

Hologram, HoloBox & Volumetric Display Solutions

Our Hologram, HoloBox, and Volumetric Display solutions seamlessly blend physical presence with digital illusion to create striking, futuristic visual experiences. These immersive displays present floating 3D content with depth and realism, enabling interactive engagement and high-impact storytelling. Ideal for experience centres, product showcases, museums, brand activations, and technology demonstrations, they transform complex ideas into captivating, memorable visual narratives.



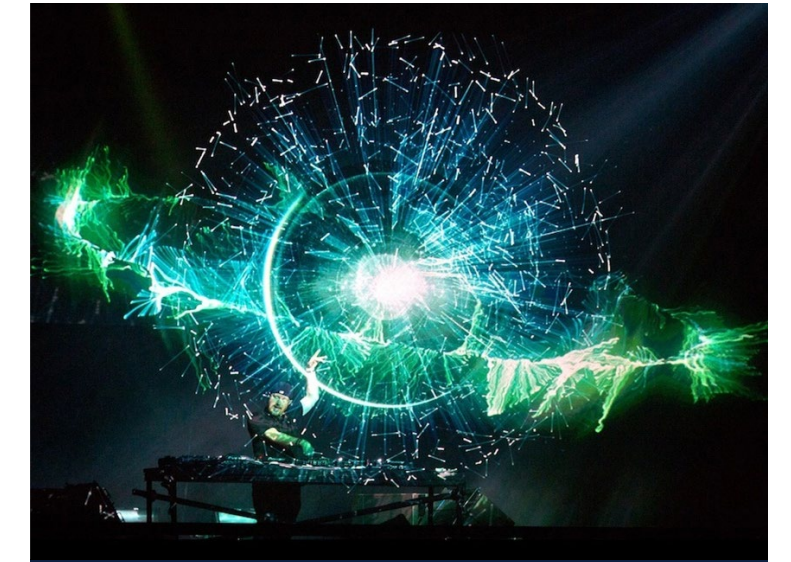
3D Volumetric LED Display

3D volumetric LED displays deliver 360-degree immersive visuals with depth and motion, enabling multi-angle viewing, interactive engagement, and impactful storytelling.



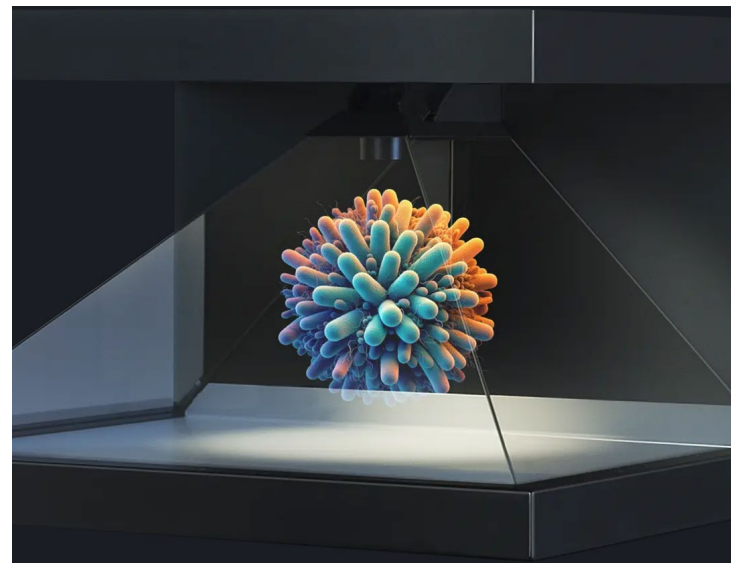
Holobox Displays

Designed for life-size projections, the Holobox enhances the presentation of people, products, AI avatars, or recorded or interactive content, offering an immersive and striking experience.



Holographic Propeller

The holographic propeller ensures maximum visibility and impact on your audience. We guarantee immediate attractiveness at all your events.



270° Holographic Pyramids

Give your flagship product unparalleled visibility with our 270° holographic pyramids. Grab everyone's attention, engage your customers, and boost your sales.



Holographic Tube

Give your flagship product unparalleled visibility with our 270° holographic pyramids. Grab everyone's attention, engage your customers, and boost your sales.



Mesh Hologram

360 Degree 3D Holographic Mesh Projector Screen for 3D Hologram Show

BeBright
GLOBAL SERVICES

www.bebright.global

BeBright
Brighten the experience

AR.VR.XR Immersive Technologies

Our AR, VR, XR and Immersive Technology solutions seamlessly blend physical and digital worlds to create engaging, interactive experiences. From immersive storytelling and experiential simulations to product visualization and virtual environments, we design extended reality solutions aligned with specific business and experience objectives. These technologies educate, engage, and inspire audiences, enabling brands to lead within today's evolving experiential landscape.



Augmented Reality (AR)

Augmented Reality overlays digital content onto the physical world in real time, enhancing real environments with interactive visuals, data, and animations. Delivered through mobile devices, tablets, or smart glasses, AR enables users to explore products, information, and storytelling layers without disconnecting from their surroundings. It is ideal for experience centres, retail, museums, wayfinding, and product visualization, offering accessible, engaging, and context-aware interactions that enhance understanding and audience engagement.



Virtual Reality (VR)

Virtual Reality creates fully immersive, computer-generated environments that place users inside a simulated digital world. Using head-mounted displays and spatial audio, VR enables deep immersion for storytelling, training, simulations, and experiential marketing. Users can explore spaces, interact with virtual objects, and experience scenarios that are difficult or impossible to replicate physically. VR is ideal for real estate visualization, training programs, innovation showcases, and immersive brand experiences.



Extended Reality (XR)

Extended Reality is an umbrella term that combines AR, VR, and mixed reality experiences into a unified interactive ecosystem. XR enables seamless transitions between physical and digital worlds, allowing real-time interaction with virtual elements anchored in physical space. Ideal for advanced experience centres, innovation labs, and training environments, XR delivers flexible, scalable, and future-ready immersive experiences aligned with evolving technologies and user behaviors.

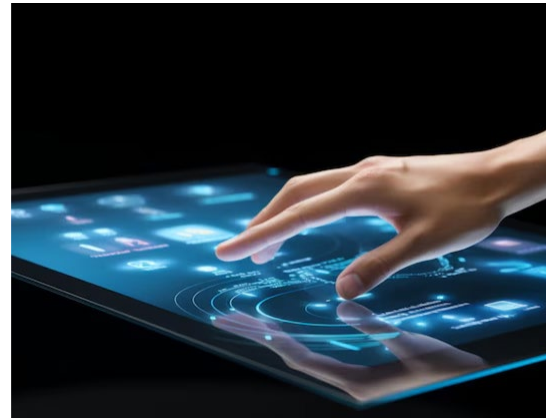
BeBright
GLOBAL SERVICES

www.bebright.global

BeBright
Brighten the experience

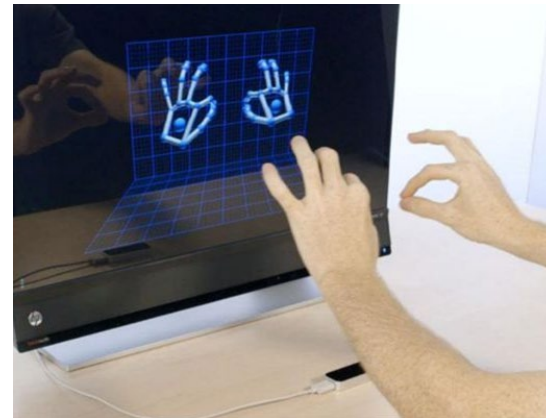
Interactive Technologies

Interactive technologies enable audiences to engage with digital content through touch, motion, sensors, objects, voice, and mobile devices. They turn static spaces into responsive environments—interactive walls, kiosks, tables, projections, and installations—that react in real time to user behavior and context. Powered by gesture tracking, proximity triggers, RFID/NFC, haptics, and AI personalization, these systems support multi-user exploration and meaningful participation. Used in experience centres, exhibitions, retail, and education, they simplify information, drive engagement, and create memorable brand experiences.



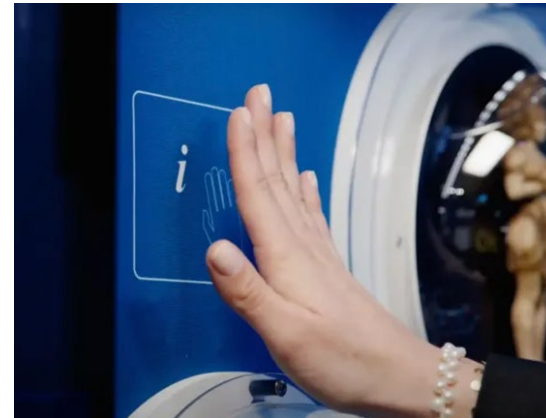
Touch & Display Interaction

- Touch screens & kiosks
- Multi-touch tables
- Interactive LED walls
- Large-format touch LED displays



Gesture, Motion & Spatial Interaction

- Motion sensors & depth cameras
- Touchless gesture recognition
- Body & hand tracking
- Spatial tracking (position, proximity, movement)



Sensor & Context-Triggered Interaction

- Proximity detection
- Pressure & interactive floors
- Environmental triggers (light, sound, occupancy)



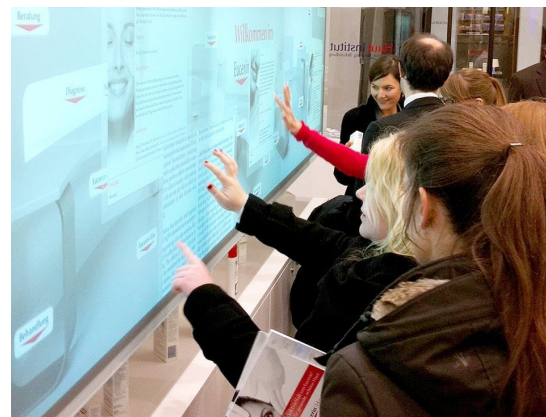
Tangible & Object-Based Interaction

- Physical controls (dials, buttons, tokens)
- RFID / NFC-enabled objects
- Interactive physical exhibits



Data-Driven & AI-Powered Interaction

- Real-time data visualization
- Adaptive content systems
- AI-driven content response & personalization
- Intent / engagement pattern recognition



Multi-User & Collaborative Interaction

- Simultaneous multi-user walls
- Collaborative learning / planning tables
- Group engagement systems



Interactive Projection Systems

- Interactive projection walls & floors
- Motion-triggered projection content
- Projection on objects / installations



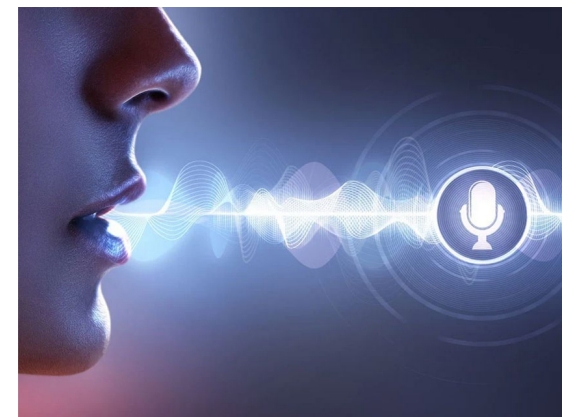
Haptic & Tactile Feedback

- Vibration-based feedback
- Force / localized tactile response
- Enhanced immersion in interactive exhibits



AR & Mixed Reality Interaction

- AR overlays via mobile or smart glasses
- Mixed reality touchpoints (physical + digital layers)
- Hybrid online-offline continuity



Voice & Mobile Interaction

- Voice assistants & conversational interfaces
- QR / NFC / BLE engagement
- App-based controllers & second-screen experiences

BeBright
GLOBAL SERVICES

www.bebright.global

BeBright
Brighten the experience

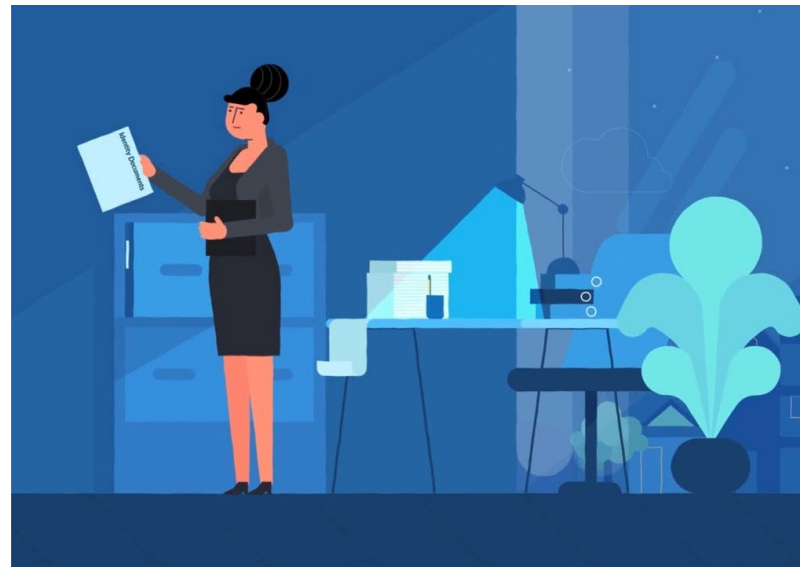
High Quality Content Creation

BeBright's content development practice combines strategy, creativity, and technology to deliver compelling visual storytelling across immersive platforms. We provide end-to-end content consultation and creative direction, ensuring every narrative aligns with the experience strategy, audience journey, and spatial context. From brand-led films and experiential content to technical explainers and interactive media, we shape emotionally engaging, visually rich content frameworks that elevate experiences and communicate messages with clarity, impact, and premium production quality.



3D Animation & Motion Graphics

Our 3D animation and motion graphics capabilities deliver cinematic-quality visuals that bring ideas, products, and environments to life. We create dynamic animations that explain complex concepts, enhance immersive installations, and strengthen brand storytelling through depth, realism, and movement. Designed for experience centres, large-format displays, and digital platforms, our 3D and motion content integrates seamlessly with spatial environments, ensuring high visual impact, technical accuracy, and engaging audience experiences.



2D Animation & Explainer Videos

Our 2D animation and explainer video solutions focus on clarity, storytelling, and effective communication. Through clean design, strong visual language, and structured narratives, we simplify complex information into engaging, easy-to-understand content. Ideal for brand stories, process explanations, educational content, and informational displays, our 2D animations ensure consistency across platforms while delivering engaging visuals that support learning, decision-making, and audience engagement within experience-driven environments.



Live Shoot & Visual Effects (VFX)

We deliver high-quality live-action productions enhanced with advanced visual effects and post-production techniques. From brand films and commercials to experiential content and promotional media, our live shoots are carefully crafted and elevated through compositing, CGI integration, and VFX. This approach allows us to blend real-world footage with digital storytelling, creating polished, immersive narratives that add realism, emotion, and cinematic impact to experience centres and brand environments.

BeBright
GLOBAL SERVICES

www.bebright.global

BeBright
Brighten the experience

BeBright

EXPERIENTIAL TECHNOLOGY PROCESS

1. Discovery & Insights

Understand client brand, objectives, audience, and space to define a clear experiential vision.

2. Concept Ideation

Develop creative concepts and storytelling frameworks, exploring immersive technologies to elevate the experience.

3. Experience Strategy

Define user journeys, engagement touchpoints, and interaction flows aligned with business goals.

4. Technology Assessment & Design

Select suitable LED, AV, AR/VR/XR, and interactive solutions ensuring scalability, reliability, and feasibility.

5. Content & Interaction Planning

Architect narrative sequences, interactive elements, and multimedia assets to engage and educate audiences.

6. Prototyping & Validation

Test concepts through mockups or simulations to refine content, flow, and technical integration.

7. Engineering & Technical Documentation

Prepare system layouts, installation guides, and detailed engineering plans for seamless deployment.

8. Production & Content Development

Create immersive content, interactive programs, and AV assets aligned with the approved concept.

9. Installation & Integration

Deploy all hardware and software, calibrating visuals, audio, and interactive elements for flawless performance.

10. Testing & Commissioning

Conduct thorough testing to ensure functionality, reliability, and optimal audience experience.

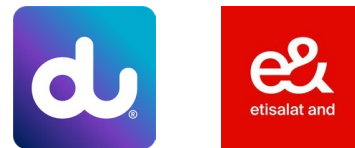
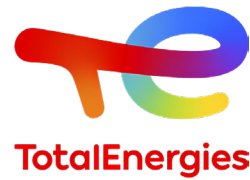
11. Training & Handover

Equip client teams with operational knowledge, user manuals, and best practices for smooth operation.

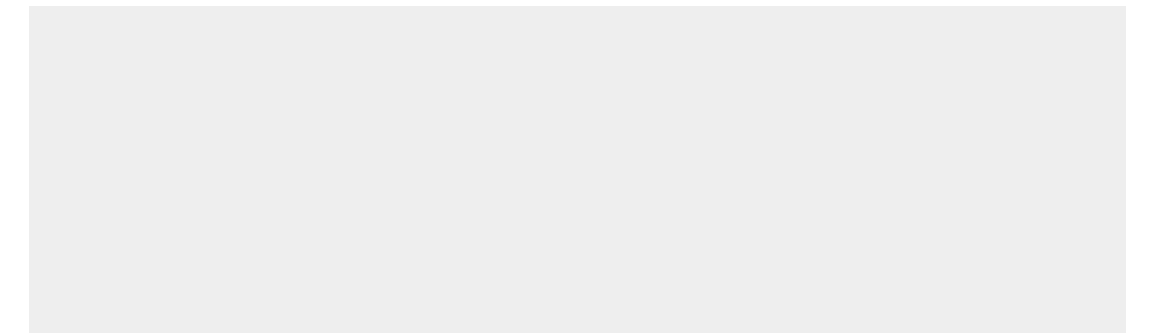
12. Ongoing Support & Optimization

Provide maintenance, upgrades, and performance monitoring, ensuring long-term reliability and evolving experiences.

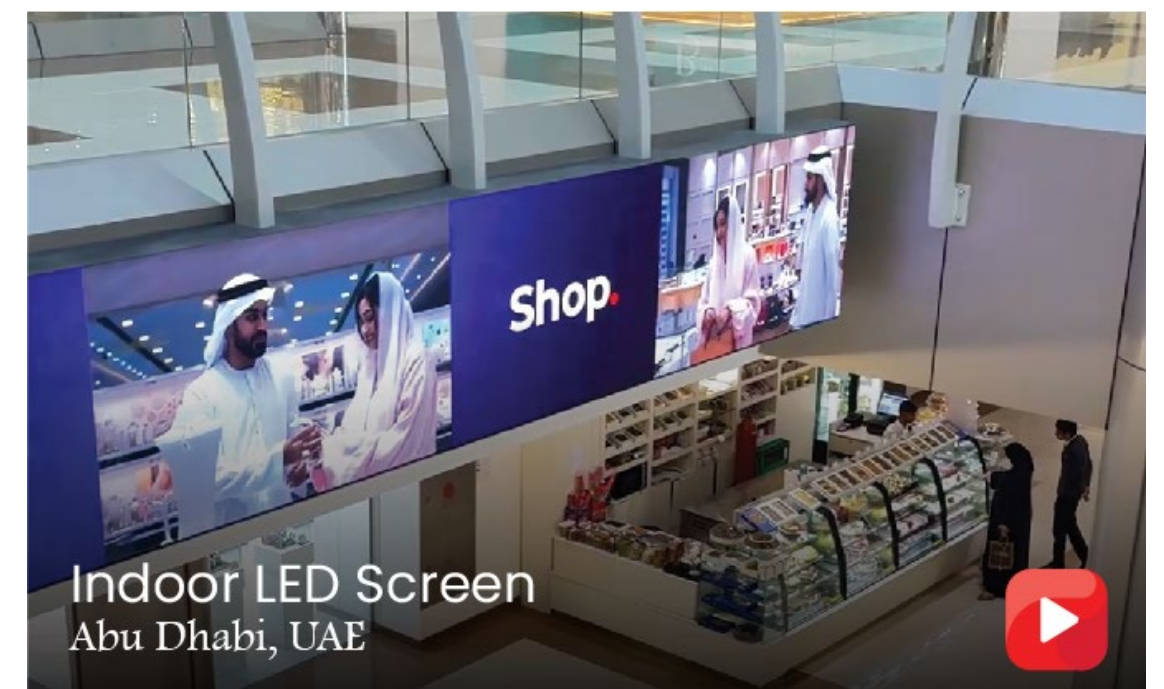
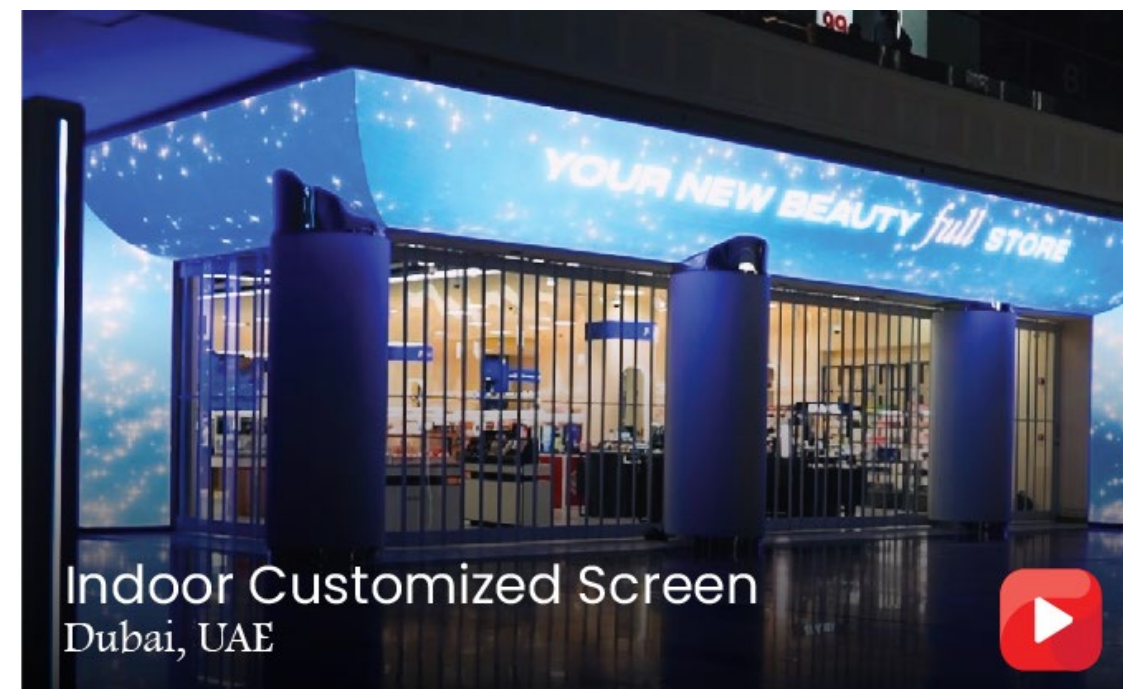
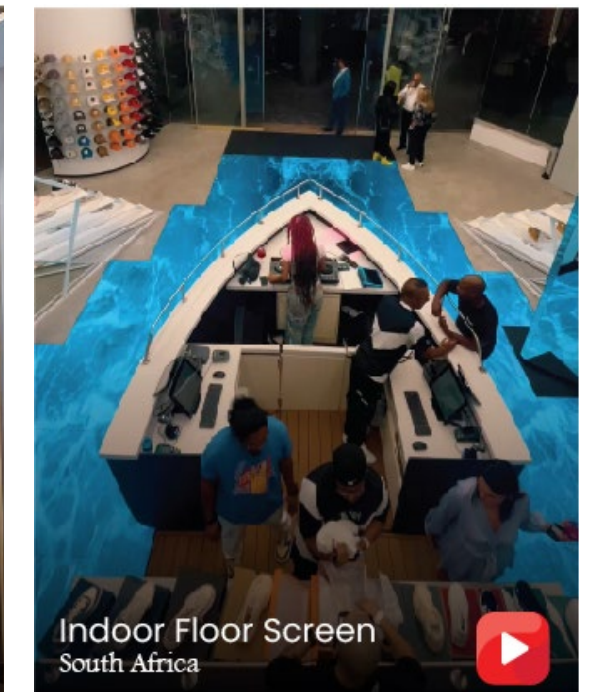
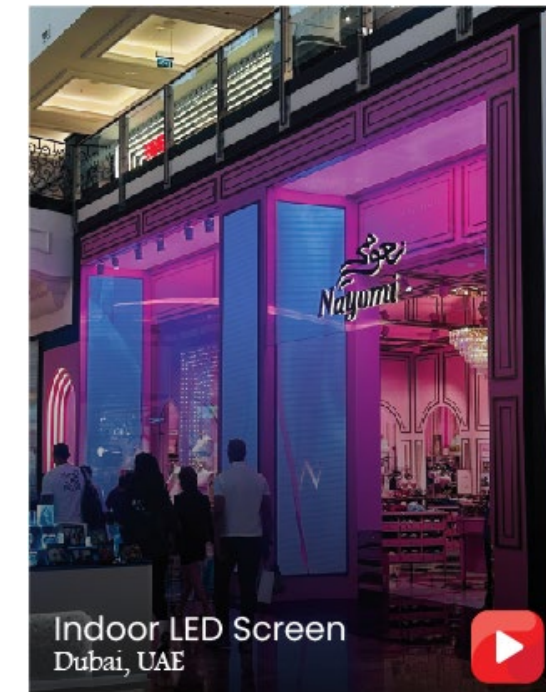
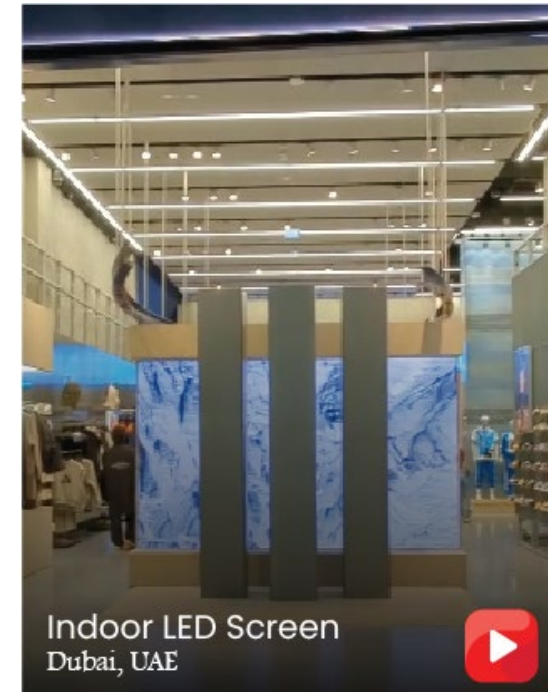
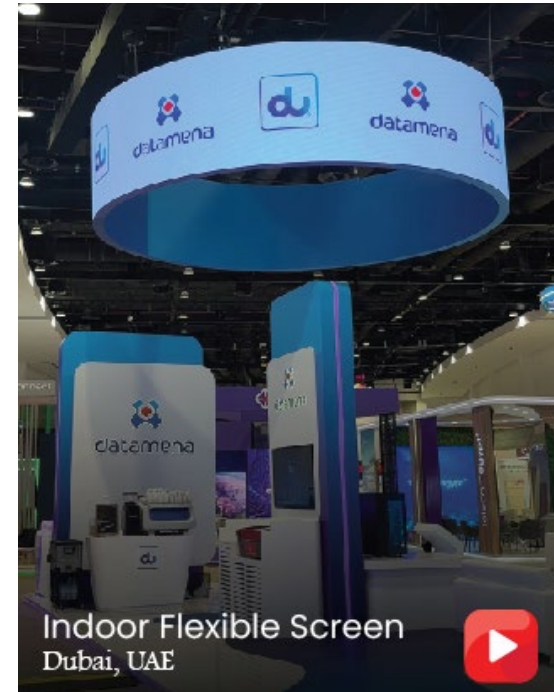
BeBright CLIENTELE & END USERS



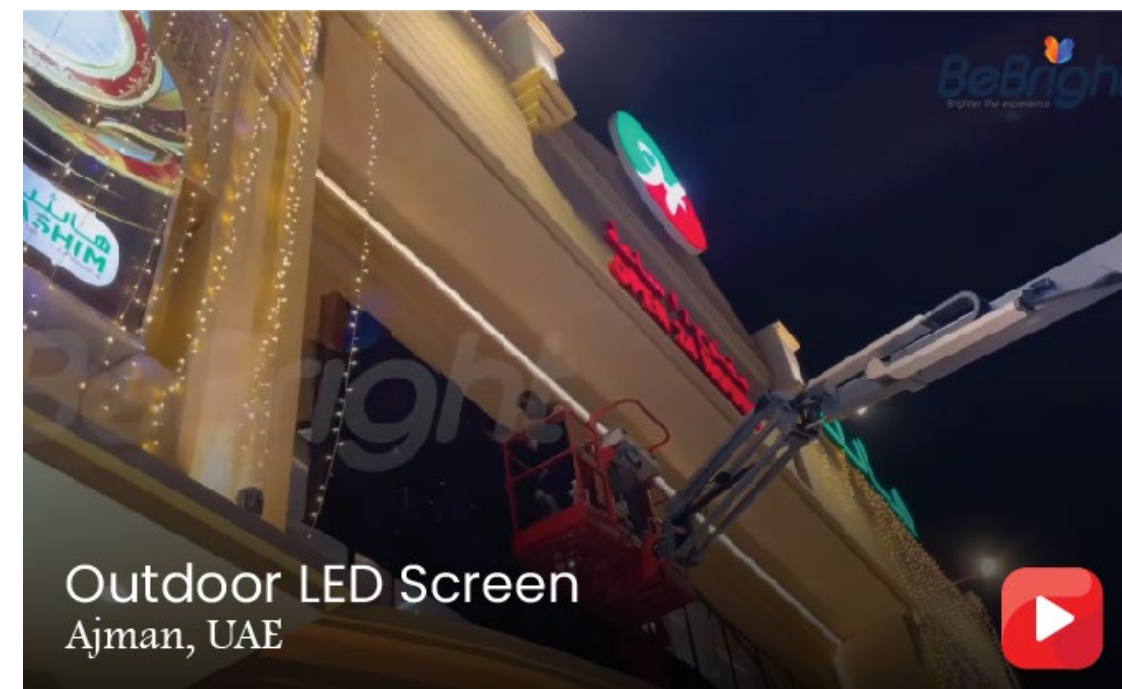
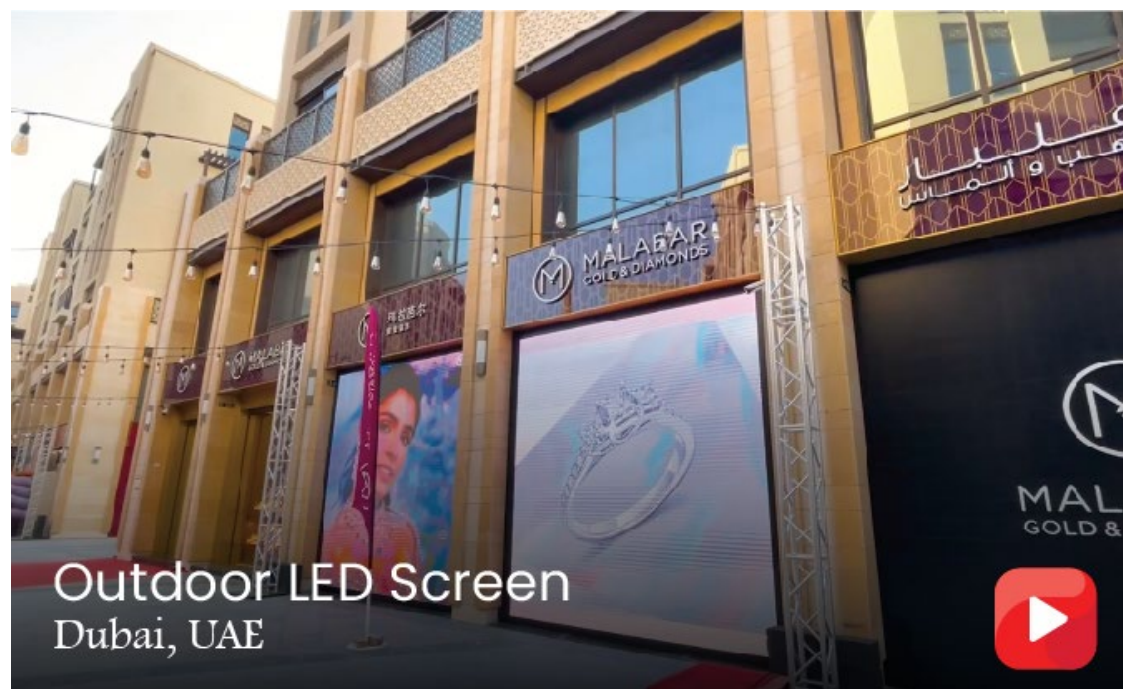
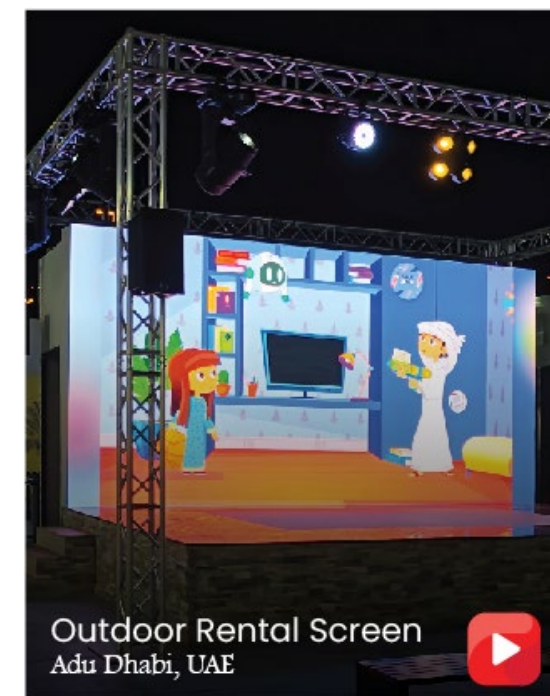
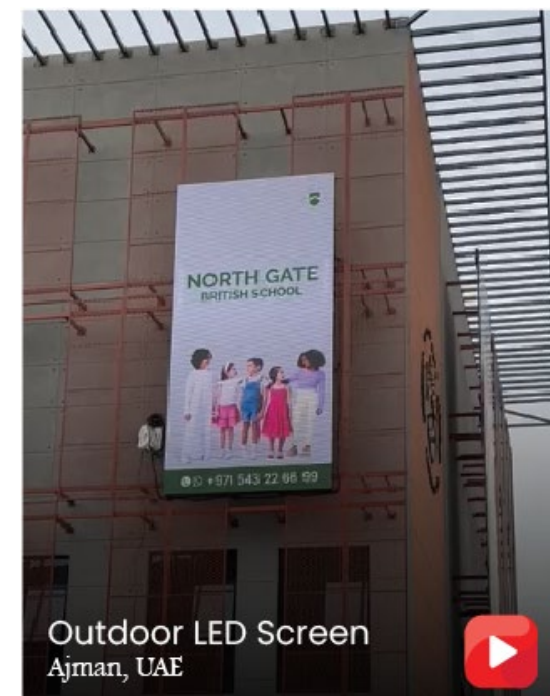
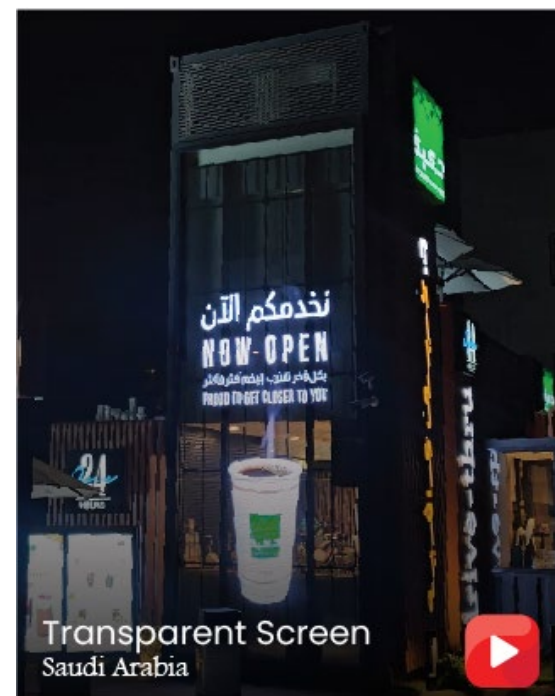
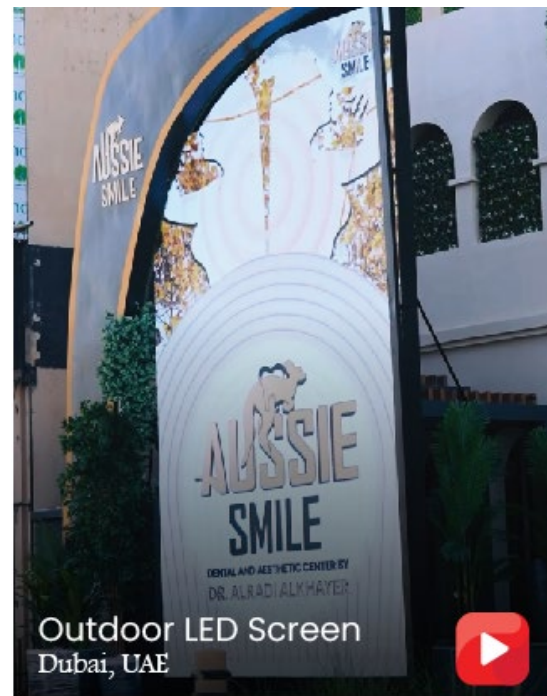
BeBright FACILITIES



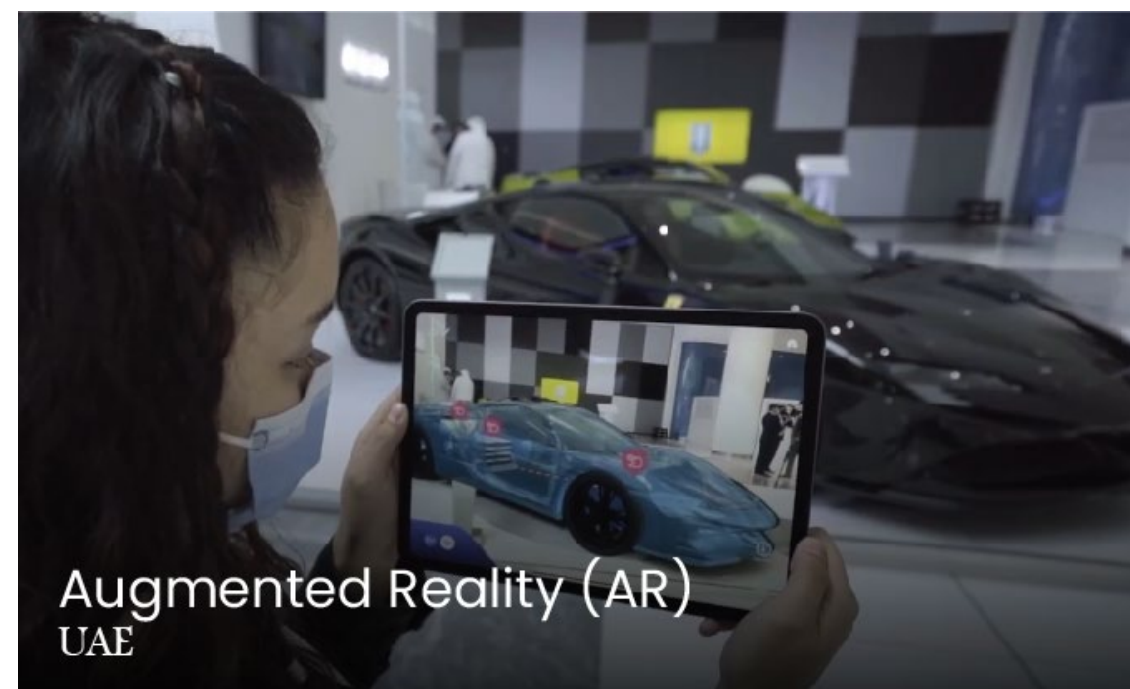
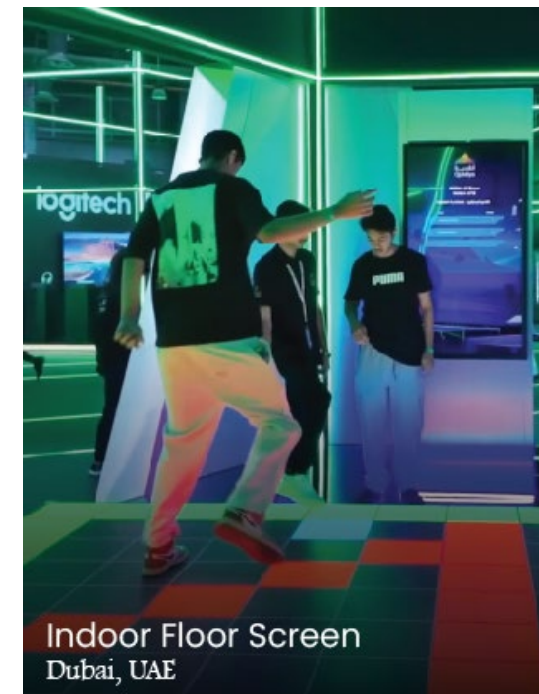
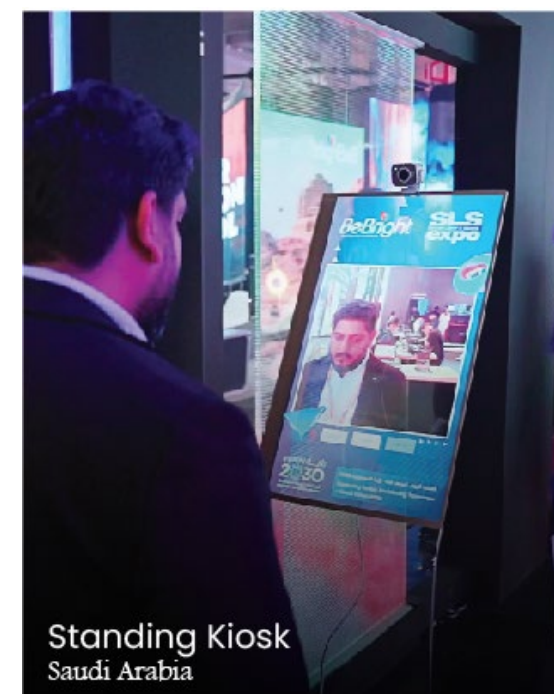
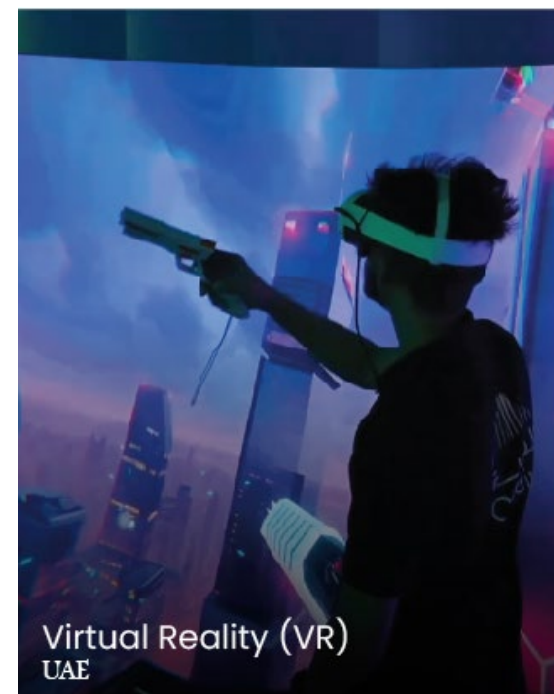
BeBright INDOOR PROJECTS



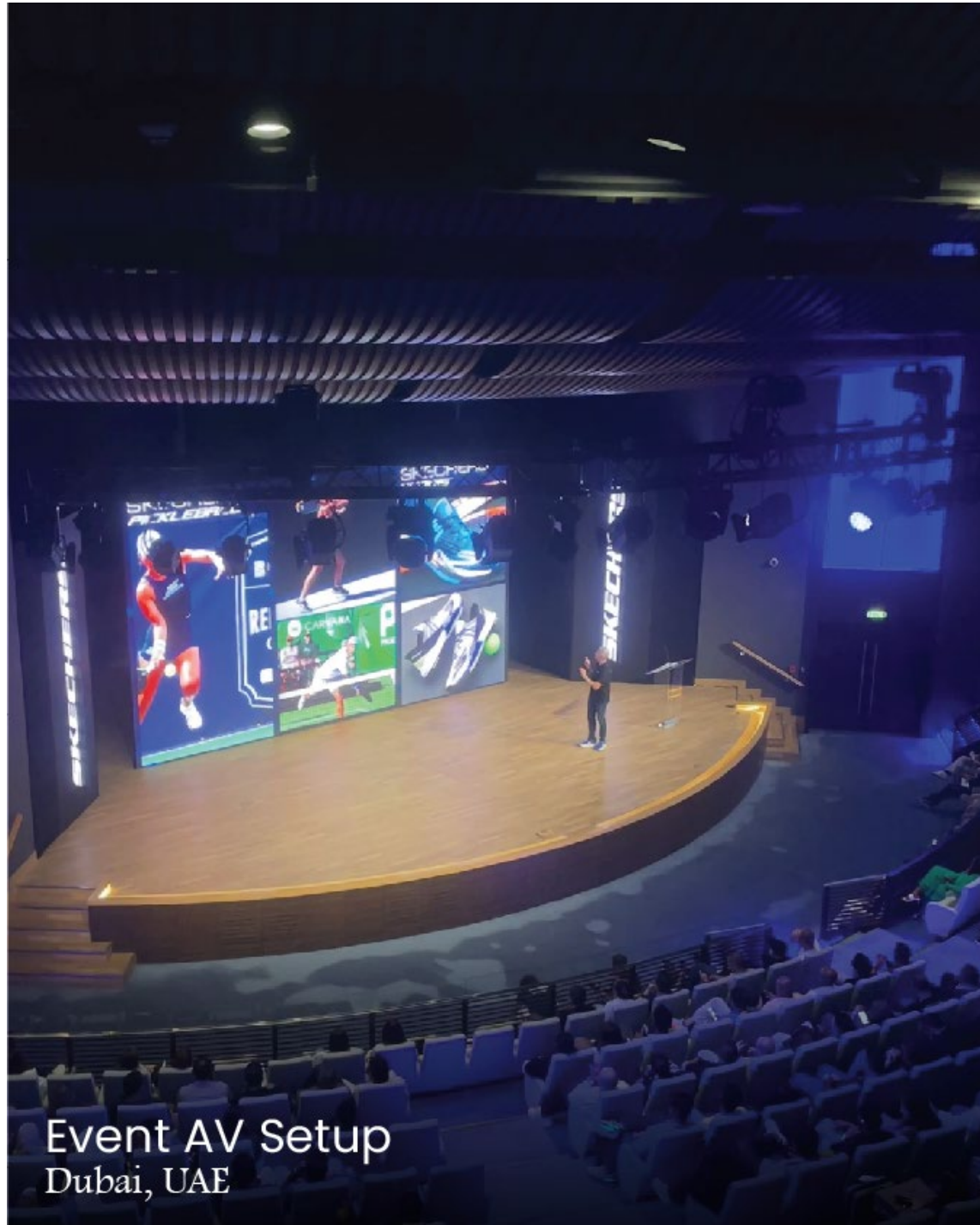
BeBright OUTDOOR PROJECTS



BeBright INTERACTIVE PROJECTS



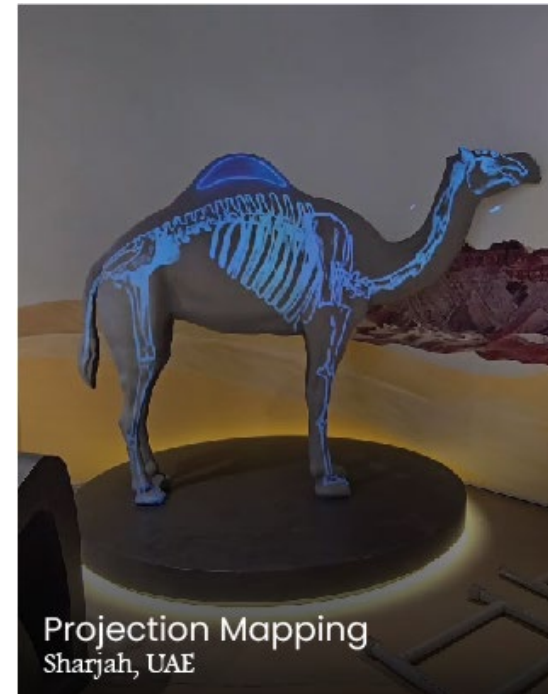
BeBright AV PROJECTS



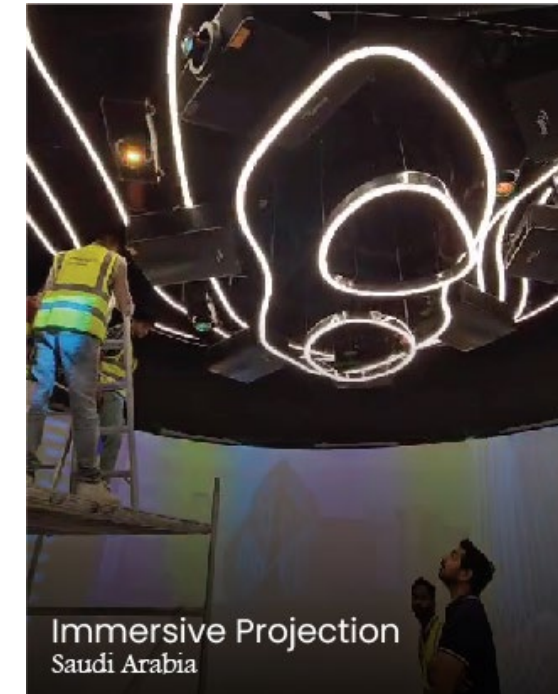
Event AV Setup
Dubai, UAE



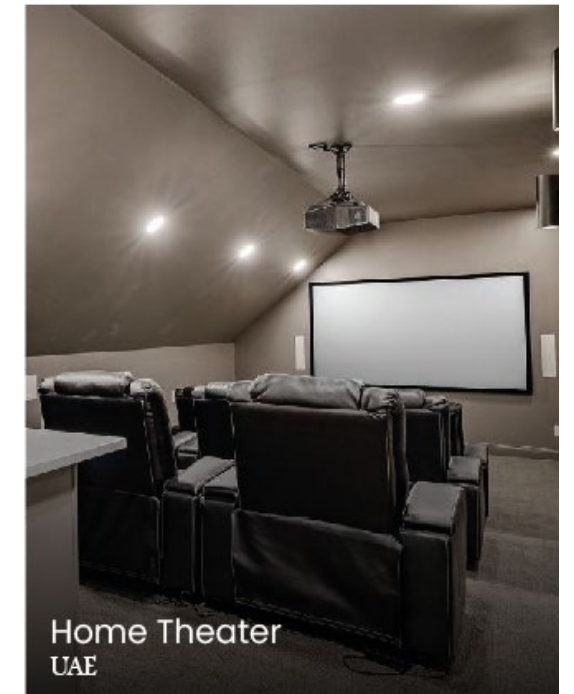
Immersive Room
Saudi Arabia



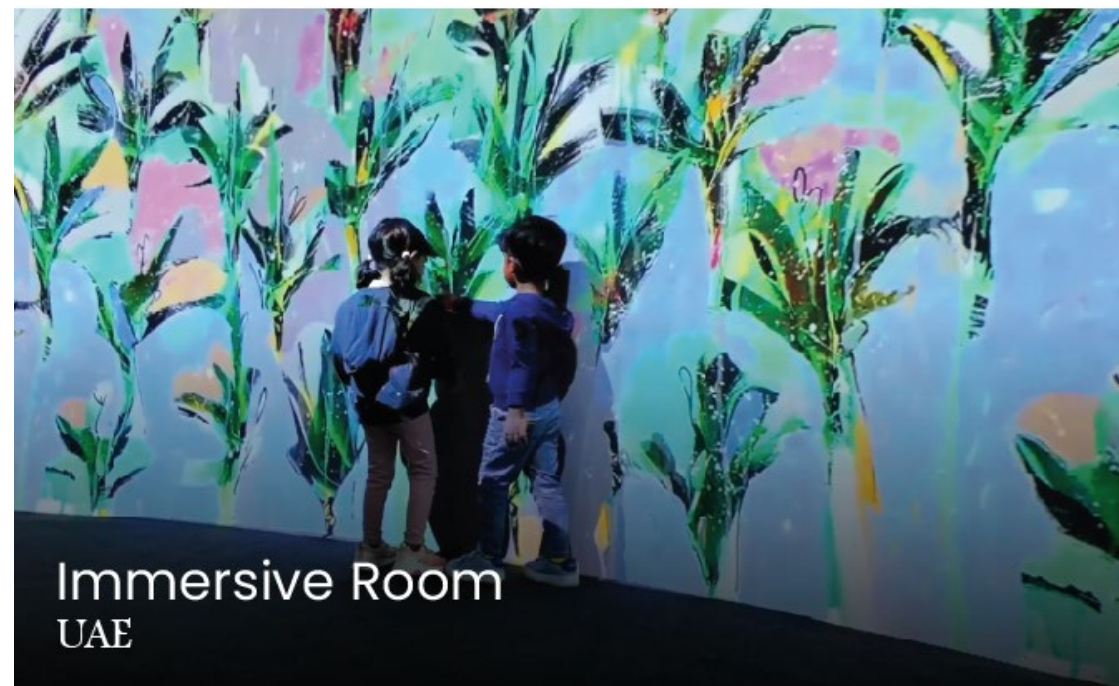
Projection Mapping
Sharjah, UAE



Immersive Projection
Saudi Arabia



Home Theater
UAE



Immersive Room
UAE



Meeting Room Solution
UAE

BeBright CERTIFICATIONS

Our engineering team is versed with all major design/ loading codes and design standards, namely:

- AISC
- MBMA
- AISI
- BS6399/CP3
- IS 875
- ASCE
- UBC
- BS5950
- IS800-1984/2007




THANK YOU



UAE:

 +971 504 037 863

 sales@bebright.global

KSA:

 +966 54 432 8456

 sales.ksa@bebright.global